



TITANIUM APPS

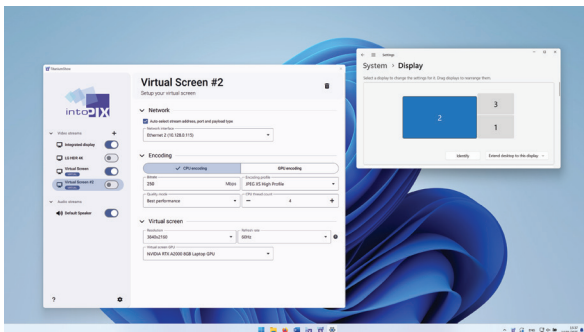
IPMX / SMPTE 2110 SOFTWARE APPS

The full power of SMPTE 2110, JPEG XS and IPMX Streaming on a computer



TitaniumShow

Turn laptops and workstations into single or multiple JPEG XS IP-based sources, supporting display resolutions of all sizes



Virtual Screens

Create virtual screens with customizable resolution parameters – from HD up to 8K.



Seamless Casting

Cast physical screens, virtual screens and audio over an IPMX / SMPTE 2110 network.



Multistream

Send simultaneously up to four JPEG XS compressed video streams.



NMOS Integration

Register senders on an NMOS registry.



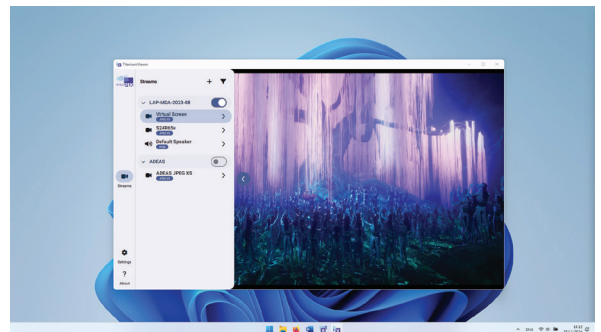
Transport Parameters

Edit senders transport parameters.



TitaniumViewer

Transform computers into highly efficient viewers of SMPTE 2110 or IPMX streams



Low-Latency Display & Monitoring

Play several media essences simultaneously – JPEG XS compressed video, and audio.



Multiview

Display up to four simultaneous video streams.



NMOS discovery

Discover and connect to senders via NMOS.



Proxy Scaling

Smart selection of the decoded resolution to match output display.



Synchronization

Maintain synchronization between media essence at playback.

COMPATIBLE & BOOSTED WITH A SET OF STANDARDS

Titanium Apps are built upon – truly – open-standards. Never will you be locked with proprietary technology.

Compatibility with multiple vendor solutions:

- SMPTE 2110 JPEG XS Broadcast devices
- IPMX devices (with JPEG XS High or TDC)
- NMOS controllers



SMPTE ST 2110 is covering the industry's vision on Video & Audio Transport over IP networks.



IPMX (from AIMS) is extending SMPTE ST 2110 capabilities with a set of additions (VSF TR10) designed for Professional AV.



JPEG XS (from the JPEG ISO Committee) is a lossless and low-latency compression standard designed to replace uncompressed video in SMPTE 2110 and IPMX.



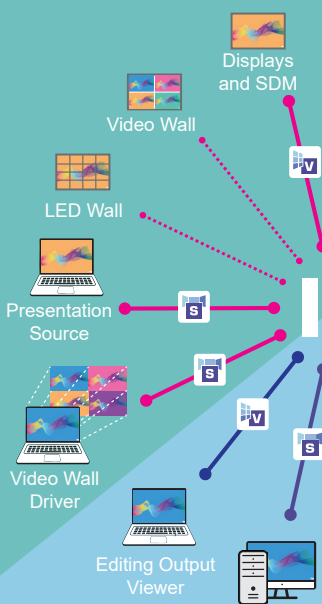
NMOS (from AMWA) is enabling control and interoperability between AV devices.

UNLEASH YOUR IP WORKFLOWS

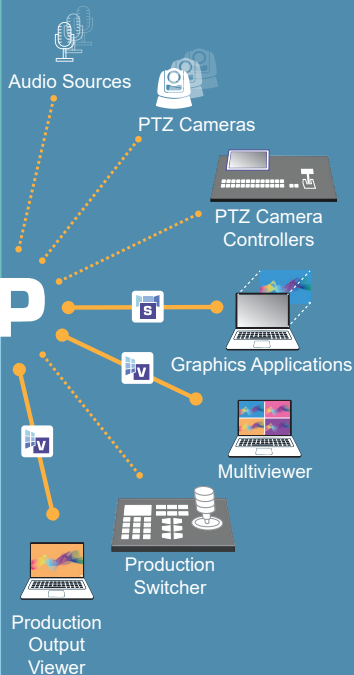
How Titanium Apps enhance IPMX & SMPTE 2110



LAN DISTRIBUTION



LIVE PRODUCTION

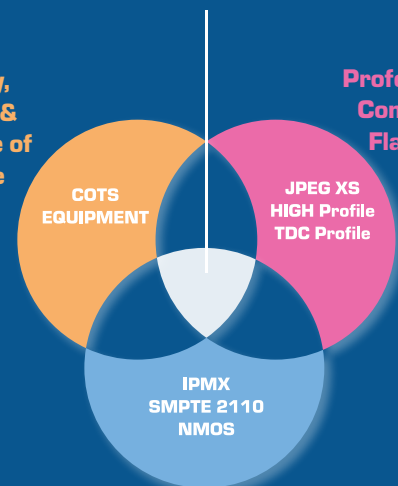


POST-PRODUCTION



Simplicity, Flexibility & Ease of Use of Software

Professional-Grade Compression for Flawless Video



Future-Proof & Standards-Based IP Media Networking

Bring simplicity to SMPTE 2110

Seamless integration into SMPTE 2110 and IPMX workflows. Enjoy an intuitive user interface, ensuring ease of use and quick setup – the antithesis of the challenges often associated with SMPTE 2110.

Pristine Video Quality

With native JPEG XS support, leverage low latency, high-performance, and unrivalled flexibility for HD, 4K, and even 8K environments.

Run on Standard PCs

With a fully software-based solution, eliminate the need for specialized hardware—such as dedicated encoders, decoders, and external NICs.

Cost-Effective & Scalable

By utilizing standard 1G/2.5GbE interfaces, ensure robust performance on Commercial-Off-The-Shelf (COTS) equipment, effectively providing a cost-effective approach to high-quality IP media workflows.

Maximum Control Interoperability

Simplify network connectivity and stream discovery even further, with built-in NMOS support.